



# CannaBusiness Laboratories, LLC

2554 Palumbo Dr. Lexington, KY 40509

## Certificate of Analysis

**Customer:**

Organic Plus Bros, LLC

682 W Bagley Rd, A6

Berea, OH 44017

Collected Date:

Received Date: **2/4/2021**

COA Released: **2/10/2021**

Comments:

Sample ID: **210204024**

Order Number: **CB210204004**

Sample Name: **Nightly Wellness Hemp Flower**

External Sample ID:

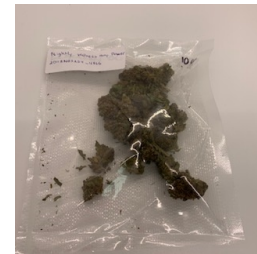
Batch Number: **2011EN05254\_4866**

Product Type: **Flower**

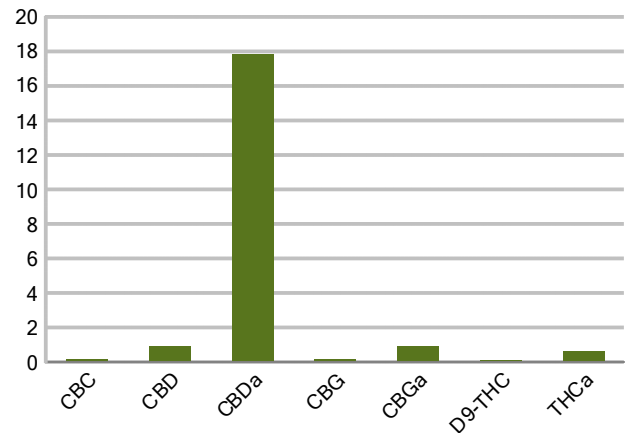
Sample Type: **Flower**

## CANNABINOID PROFILE

Analyte	LOQ (%)	% weight	mg/g
CBC	0.01	0.121	1.206
CBD	0.01	0.888	8.883
CBDa	0.01	17.84	178.4
CBDV	0.01	ND	ND
CBG	0.01	0.160	1.596
CBGa	0.01	0.898	8.981
CBN	0.01	ND	ND
d8-THC	0.01	ND	ND
d9-THC	0.01	0.105	1.054
THCa	0.01	0.128	1.280
<b>Total Cannabinoids</b>		<b>20.60</b>	<b>206.0</b>
<b>Total Potential THC</b>		<b>0.217</b>	<b>2.170</b>
<b>Total Potential CBD</b>		<b>16.53</b>	<b>165.3</b>
<b>Total Potential CBG</b>		<b>0.948</b>	<b>9.480</b>



Cannabinoids (% weight)



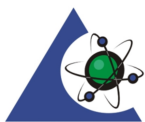
**Ratio of Total Potential CBD to Total Potential THC 26.70 : 1**

**Ratio of Total Potential CBG to Total Potential THC 1.53 : 1**

\*Total Cannabinoids refers to the sum of all cannabinoids detected.

\*Total Potential CBD = (0.877 x CBDa) + CBD. \*Total Potential THC = (0.877 x THCa) + THC. \*Total Potential CBG = (0.877 x CBGa) + CBG.

\*Total Potential THC/CBD are calculated to take into account the loss of an acid group during decarboxylation.



**PJLA Testing**  
Accreditation #109588

Authorized Signature

Laboratory Manager

Jamie Hobgood

02/10/2021 12:12 PM

DATE

This product has been tested by CannaBusiness Laboratories using validated testing methodologies and a quality system. Values reported relate only to the product tested. CannaB Laboratories makes no claims as to the efficacy, safety, or other risks associated with any detected or non-detected levels of any compounds reported herein. This Certificate shall be reproduced except in full, without the written permission of CannaBusiness Laboratories. Uncertainty information is available on request. Photo is of sample received by the lab and may vary from final packaging. The results apply to the sample as received. ISO/IEC 17025:2017



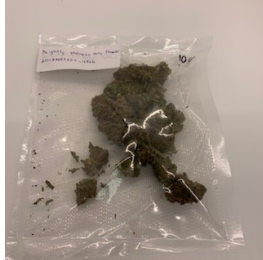
**CannaBusiness Laboratories, LLC**  
 2554 Palumbo Dr. Lexington, KY 40509



Sample ID: 210204024  
 Sample Name: Nightly Wellness Hemp  
 Sample Type: Flower

## Certificate of Analysis

**Customer**  
 Organic Plus Bros, LLC  
 682 W Bagley Rd, A6  
 Berea, OH 44017



Overall Batch Results	
<b>PASS</b>	
Pesticide N/A	Moisture Content N/A
Potency <b>PASS</b>	Water Activity N/A
Mycotoxins <b>PASS</b>	Heavy Metals <b>PASS</b>
Microbial Screen <b>PASS</b>	Residual Solvents N/A
Terpenoids N/A	

**Sample Name:** Nightly Wellness Hemp Flower  
**Sample ID:** 210204024  
**Product Type:** Flower  
**Sample Type:** Flower  
**Collected Date:**  
**Received Date:** 02/04/2021  
**Batch Number:** 2011EN05254\_4866  
**Batch Size:**  
**Sample Size:**  
**COA released:** 02/10/2021 12:12 PM

Mycotoxins							
Date Tested: 02/05/2021		Method:		Instrument:			

Analyte	Result	Units	LOQ	Result	Analyte	Result	Units	LOQ	Result
Ochratoxin A	ND	ppm	0.010	Pass	Aflatoxin B1	ND	ppm	0.010	Pass
Aflatoxin G2	ND	ppm	0.010	Pass	Aflatoxin B2	ND	ppm	0.010	Pass
Aflatoxin G1	ND	ppm	0.010	Pass					

Metals							
Date Tested: 02/05/2021		Method:		Instrument:			

Analyte	Result	Units	LOQ	Result	Analyte	Result	Units	LOQ	Result
Arsenic	<LOQ	ppm	0.500	Pass	Cadmium	<LOQ	ppm	0.500	Pass
Lead	<LOQ	ppm	0.500	Pass	Mercury	<LOQ	ppm	3.000	Pass

Microbial							
Date Tested: 02/09/2021		Method:		Instrument:			

Analyte	Result	Units	LOQ	Result	Analyte	Result	Units	LOQ	Result

NT = Not tested, ND = Not detected; LOQ = Limit of Quantitation; <LOQ = Detected; >ULOL = Above upper limit of linearity; CFU/g = Colony forming units per 1 gram; TNTC = Too numerous to count

CannaBusiness Laboratories  
 License # P-0059: (859)-514- 6999 <https://www.cannabusinesslabs.us>

This product has been tested by CannaBusiness Laboratories using validated testing methodologies and a quality system. Values reported relate only to the product tested. CannaBusiness Laboratories makes no claims as to the efficacy, safety, or other risks associated with any detected or non-detected levels of any compounds reported herein. This Certificate shall not be reproduced except in full, without the written permission of CannaBusiness Laboratories. Uncertainty information is available on request. Photo is of sample received by the lab and may vary from final packaging. The results apply to the sample as received. ISO/IEC 17025:2017 Accredited.



CannaBusiness Laboratories, LLC  
2554 Palumbo Dr. Lexington, KY 40509



Sample ID: 210204024  
Sample Name: Nightly Wellness Hemp  
Sample Type: Flower

## Certificate of Analysis

<b>Microbial</b>							
Date Tested: 02/09/2021		Method:		Instrument:			

Analyte	Result	Units	LOQ	Result	Analyte	Result	Units	LOQ	Result
STEC (E. coli)	Negative			Pass	Salmonella	Negative			Pass
Listeria spp.	Negative			Pass	L. monocytogenes	Negative			Pass
Yeast/Mold (qPCR)	Negative			Pass					



### Authorized Signature

  
Laboratory Manager

Jamie Hobgood

02/10/2021 12:12 PM

**Date Time**

NT = Not tested, ND = Not detected; LOQ = Limit of Quantitation; <LOQ = Detected; >ULOL = Above upper limit of linearity; CFU/g = Colony forming units per 1 gram; TNTC = Too numerous to count

CannaBusiness Laboratories  
License # P-0059: (859)-514- 6999 <https://www.cannabusinesslabs.us>

This product has been tested by CannaBusiness Laboratories using validated testing methodologies and a quality system. Values reported relate only to the product tested. CannaBusiness Laboratories makes no claims as to the efficacy, safety, or other risks associated with any detected or non-detected levels of any compounds reported herein. This Certificate shall not be reproduced except in full, without the written permission of CannaBusiness Laboratories. Uncertainty information is available on request. Photo is of sample received by the lab and may vary from final packaging. The results apply to the sample as received. ISO/IEC 17025:2017 Accredited.